

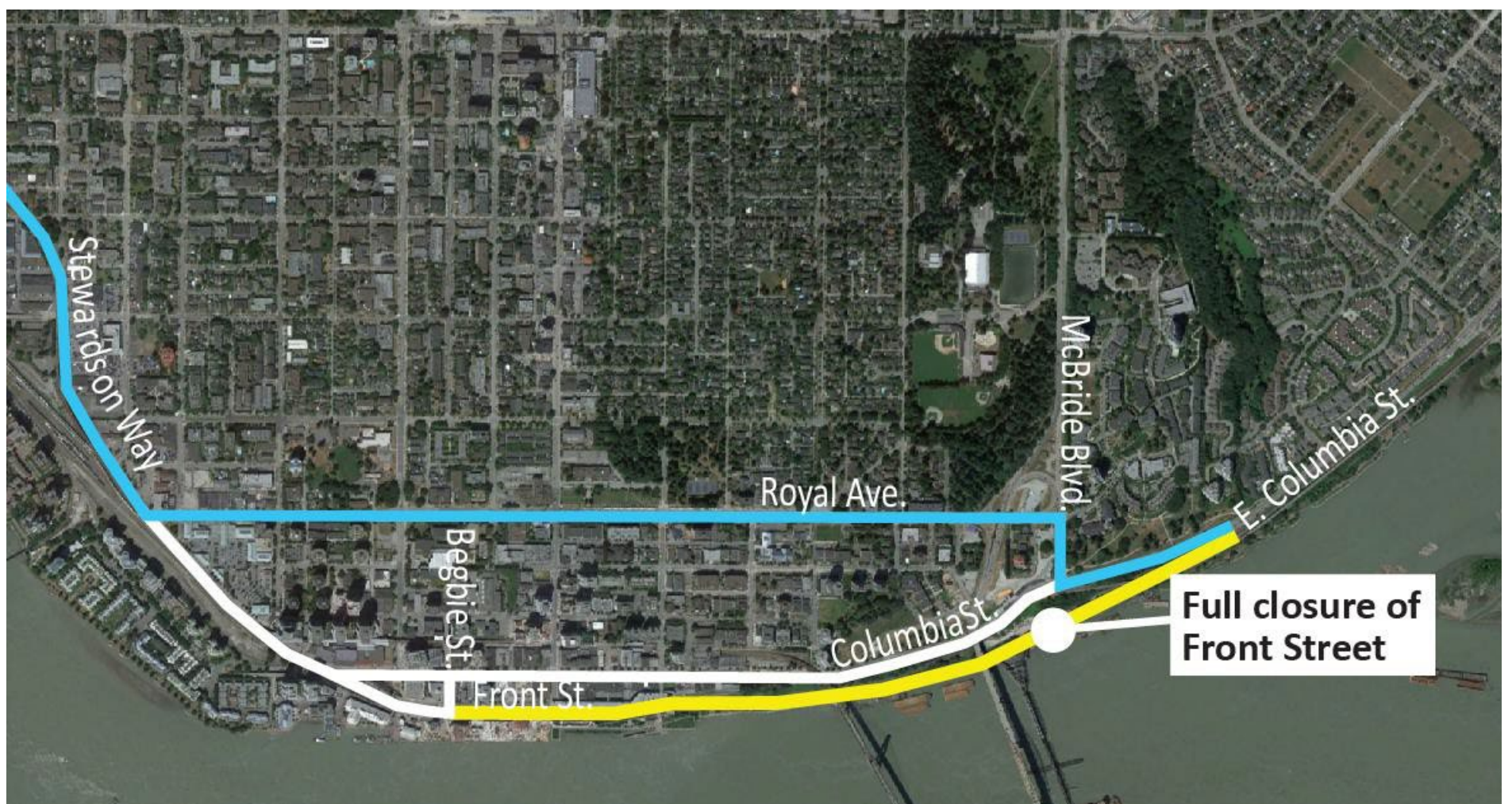
# Detour sheet

## Regular traffic detour routes during Front Street closures

In February 2024, the project began implementing sequential full road closures on Front Street and Columbia Street near the Pattullo Bridge for crews to install steel girders and build the new bridge deck. Front and Columbia will not be closed at the same time.

A six-month closure of Front Street will begin the week of June 17 to complete the girder installation and bridge deck construction over Front Street.

While this full closure is in effect, drivers will be detoured to Columbia Street as shown below. Commercial vehicles will be detoured to designated truck routes such as Royal Avenue and Braid Street/E 8th Ave during the day, and 10th Ave both day and night. **Front Street Mews will remain open and access to businesses will be maintained.** All traffic pattern changes and detours will be well signed, and traffic control personnel will be on site to assist when necessary.



- Road closure
- Regular traffic detour route
- Daytime commercial vehicle detour route

Additional information regarding the Front Street closure and girder installation work is available on the Current Works and Information Sheets pages at [pattullobridgereplacement.ca](http://pattullobridgereplacement.ca).

If you have questions or need assistance, please email [info@fcgp.ca](mailto:info@fcgp.ca) or call the 24/7 phone line: 1-844-815-6149.

### Contact the Project

24/7 Phone Line  
1-844-815-6149

Project Information  
Website: [pattullobridgereplacement.ca](http://pattullobridgereplacement.ca)  
Twitter: @pattulloproject  
Email: [pattullobridgeproject@gov.bc.ca](mailto:pattullobridgeproject@gov.bc.ca)

Work on the Project  
[bcib.ca](http://bcib.ca)  
[info@bcib.ca](mailto:info@bcib.ca)